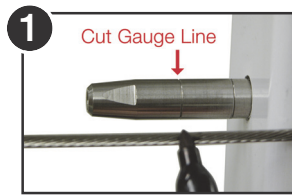


Installation instructions for using Quick-Connect® fittings in composite wrapped wood posts

Using the Cut Gauge Line



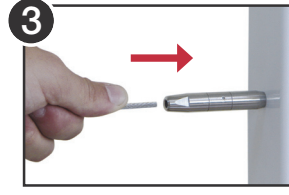
Use the Cut Gauge Line on the Quick-Connect® body to locate and mark the cable for proper trim length. This is typically used when attaching the second in a pair of end fittings.



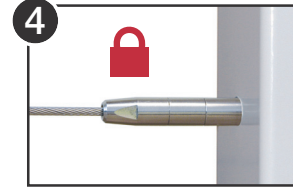
1 Stretch the cable tight. Mark with felt pen at Cut Gauge Line.



2 Trim cable at the mark.



3 Insert cable as far as it will go into fitting. If cable is too long, remove it using a Release Tool and trim as needed.



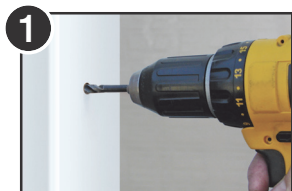
4 Quick-Connect® Jaws lock onto cable automatically. Tighten the cable line using the tension adjustment fitting.

Protection Seals are Important!

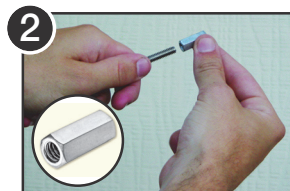
Please make sure and attach the protection seals that come with your Quick-Connect® fitting to protect the long term performance of your CableRail system. *Installation Tip!* Use a silicone spray to lubricate the protection seals for easier installations.

Installing Quick-Connect® Lag Fitting

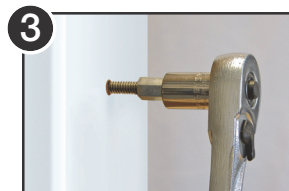
The Pivot Fitting is comprised of a Quick-Connect® body and a stainless steel Hanger Bolt. The Hanger Bolt needs to be installed prior to the Quick-Connect® body. **DO NOT** attempt to install the Hanger Bolt with the Quick-Connect® Fitting attached, or you may damage the fitting.



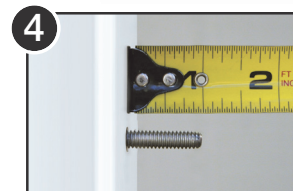
1 Drill 7/64" pilot hole 2" deep into termination post. Drill 9/32" hole just through the composite sleeve.



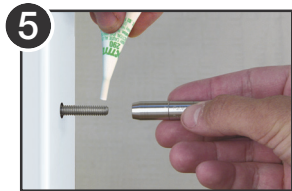
2 Spin Hanger Bolt Installation Tool onto the end of the bolt.



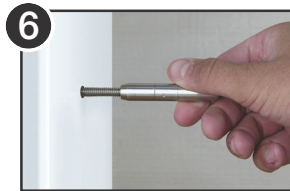
3 Drive Hanger Bolt into post using socket or electric drill.



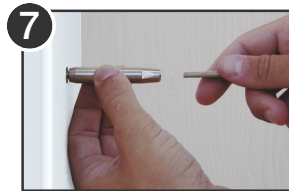
4 Drive until threaded section protrudes approx. 1" from post face.



5 Apply a drop of high strength thread locking compound to threads.



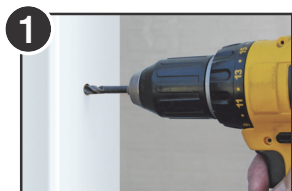
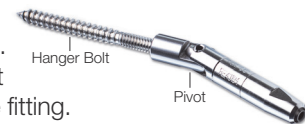
6 Spin Quick-Connect® onto Hanger Bolt until it bottoms out.



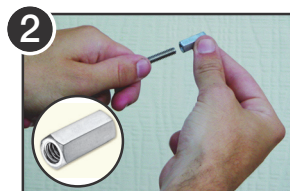
7 Insert cable all the way into Quick-Connect® fitting until it stops. Jaws will lock automatically.

Installing Quick-Connect® Pivot Fitting

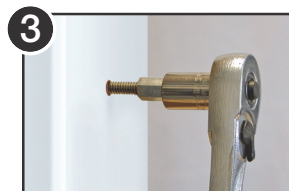
The Pivot Fitting is comprised of a Quick-Connect® body and a stainless steel Hanger Bolt. The Hanger Bolt needs to be installed prior to the Quick-Connect® body. **DO NOT** attempt to install the Hanger Bolt with the Quick-Connect® Fitting attached, or you may damage the fitting.



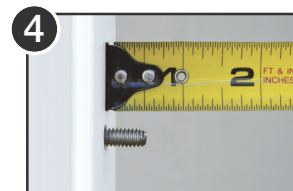
1 Drill 7/64" pilot hole 2" deep into termination post. Drill 9/32" hole just through the composite sleeve.



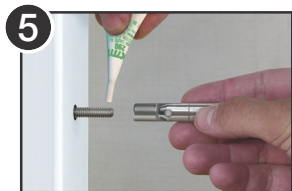
2 Spin Hanger Bolt Installation Tool onto the end of the bolt.



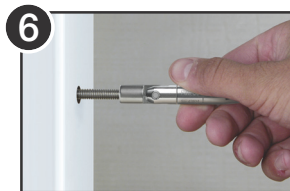
3 Drive Hanger Bolt into post using socket or electric drill.



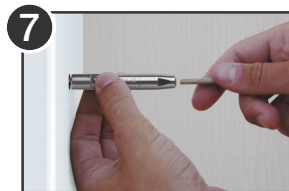
4 Drive until threaded section protrudes approx. 1/2" from post face.



5 Apply a drop of high strength thread locking compound to threads.



6 Spin Quick-Connect® onto Hanger Bolt until it bottoms out.



7 Insert cable all the way into Quick-Connect® fitting until it stops. Jaws will lock automatically.



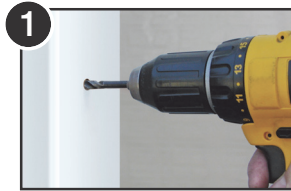
www.feeneyinc.com/QCinstall
Toll free: 800-888-2418

Installation steps for Quick-Connect® Tensioner fittings in composite wrapped wood posts

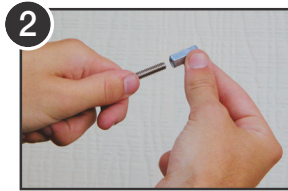
Note: We recommend attaching the non-adjustable fixed-style end fittings before attaching the tension-adjustment-style fittings shown below.



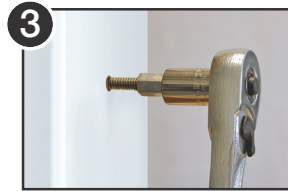
Installing the Quick-Connect® Lag Tensioner



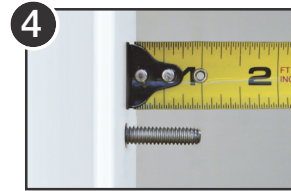
1 Drill 7/64" pilot hole 2" deep into termination post. Drill 9/32" hole just through the composite sleeve.



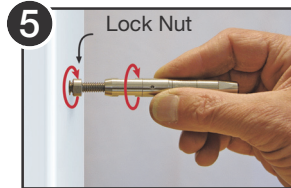
2 Spin Hanger Bolt Installation Tool onto the end of the bolt.



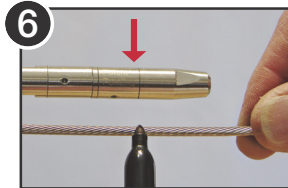
3 Drive Hanger Bolt into post using socket or electric drill.



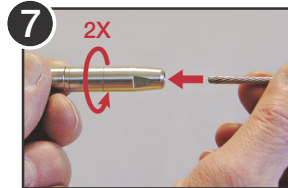
4 Drive until threaded section protrudes 1" from post face.



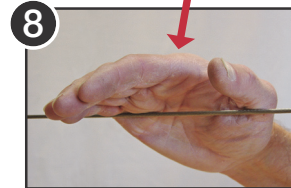
5 Spin the lock-nut onto the exposed threads. Then attach Quick-Connect® and rotate the body 4 full turns.



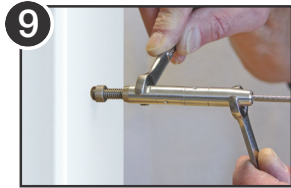
6 Stretch cable tight across fitting and mark at Cut Gauge Line. Cut cable at mark.



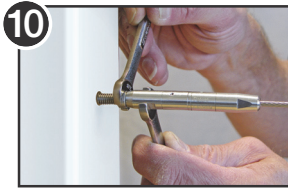
7 Loosen the swivel component 2 full turns and insert cut cable end as far as it will go into the fitting; the jaws will automatically lock on.



8 Hand tighten the swivel as far as possible, then swiftly hit the cable line with your palm several times to ensure that jaws are securely seated.



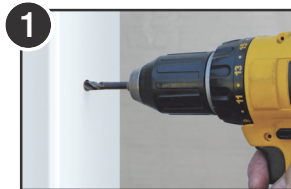
9 Use wrenches to tighten the Quick-Connect® to desired final tension.



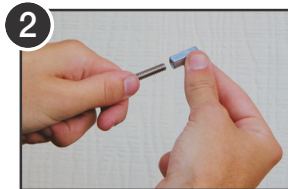
10 Tighten the lock-nut against the swivel component to prevent the fitting from loosening.



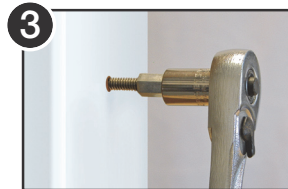
Installing the Quick-Connect® Pivot Tensioner



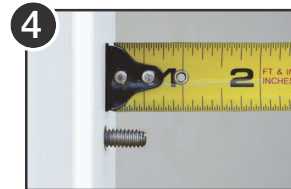
1 Drill 7/64" pilot hole 2" deep into termination post. Drill 9/32" hole just through the composite sleeve.



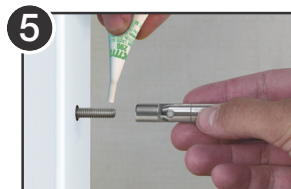
2 Spin Hanger Bolt Installation Tool onto the end of the bolt.



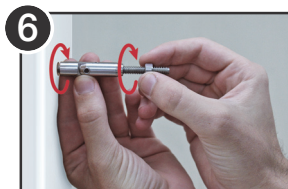
3 Drive Hanger Bolt into post using socket or electric drill.



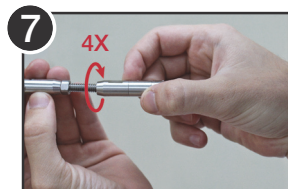
4 Drive until threaded section protrudes 1/2" from post face.



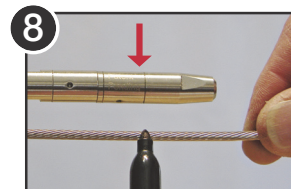
5 Apply a drop of high strength thread locking compound to machine threads of the hanger bolt.



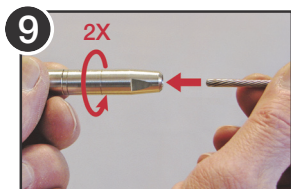
6 Spin the pivot component all the way onto the hanger bolt. Make sure the lock-nut is all the way on the threads.



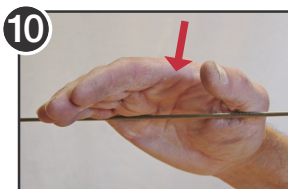
7 Attach the QC swivel component to the threads with 4 spins. Do NOT add the Lockite to these threads, or you will not be able to properly tension the cable.



8 Stretch cable tight across fitting and mark at Cut Gauge Line. Cut cable at mark.



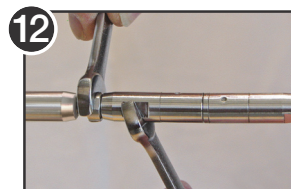
9 Loosen the swivel component 2 full turns and insert cut cable end as far as it will go into the fitting; the jaws will automatically lock on.



10 Hand tighten the turnbuckle as far as possible, then swiftly hit the cable line with your palm several times to ensure that jaws are securely seated.



11 Use wrenches to tighten the Quick-Connect® to desired final tension.



12 Tighten the lock-nut against the swivel component to prevent the fitting from loosening.